

Future Land Use

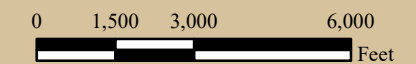
- US and State Highways
- County Highways
- Town/Municipal Roads
- Private Roads
- Railroads
- Navarino Wildlife Area Boundary
- Municipal Boundaries
- Sections with Section Numbers
- Parcels

Future Land Use Categories

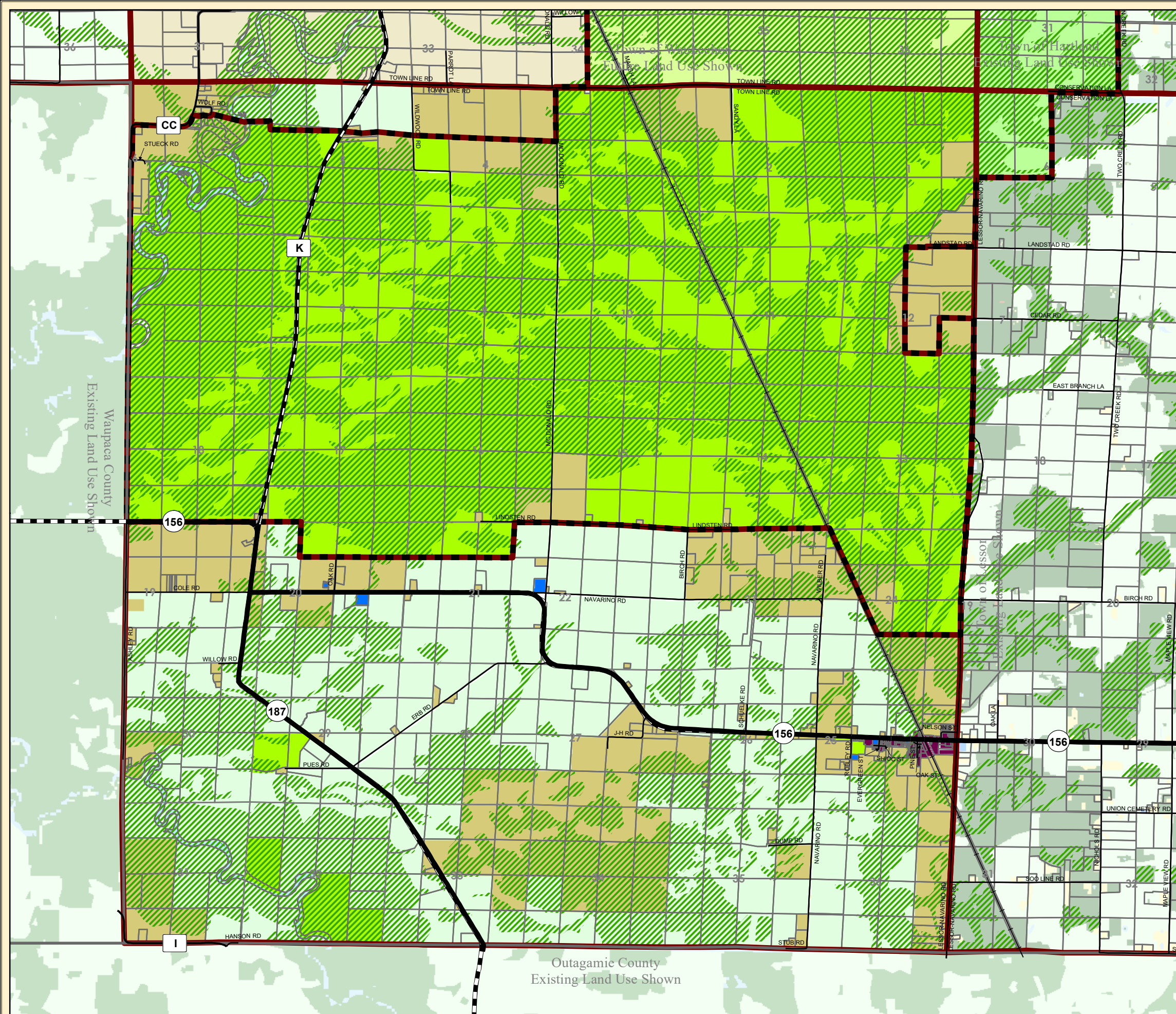
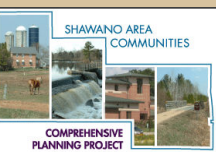
- Environmental Corridor
- Agriculture and Resource Preservation
- Public Open Space and Recreation
- Open Lands and Residential
- Downtown/Unincorporated Village
- Community Facilities

Shapes on map represent general recommendations for future land use. Actual boundaries between different future land use categories and associated zoning districts may vary somewhat from representations on this map. Not all lands shown in any particular future land use category are immediately appropriate for development, rezoning, or subdivision. Environmental corridors depicted on this map use generalized boundaries of environmental features identified by WisDNR, FEMA, and Shawano County. Actual Environmental Corridor boundaries may be defined or adjusted through a detailed on-site investigation

Sources: ECWRPC, Shawano County LIO, WisDOT, FEMA, WisDNR, V&A, Local Communities



11/1/2017



Waupaca County Existing Land Use Shown

Outagamie County Existing Land Use Shown